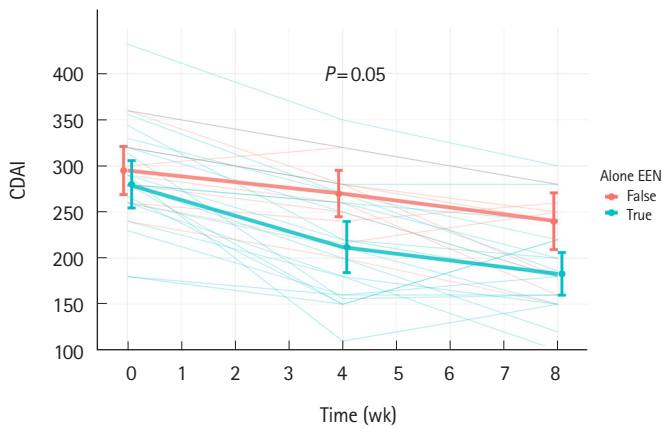
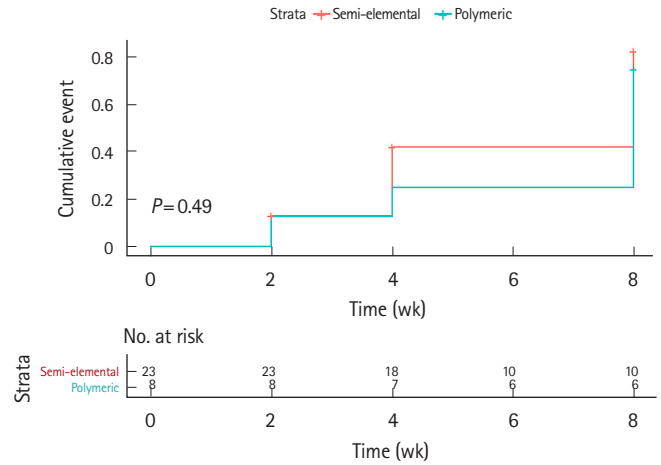


See “Efficacy and tolerability of exclusive enteral nutrition in adult patients with complicated Crohn’s disease ” on page 291-300.



Supplementary Fig. 1. Profile plots depicting change in CDAl across subgroups when exclusive enteral nutrition (EEN) was administered as a sole modality of treatment and when it was used in combination with other treatment. There was a significant change in CDAl across both groups ($P < 0.05$).



Supplementary Fig. 2. Kaplan-Meier response plot showing clinical response across different formulations of exclusive enteral nutrition. The response rates with semi-elemental ($n = 23$) and polymeric ($n = 8$) preparation were 75% and 82.6% respectively (log-rank test, $P = 0.49$).